



# Theory Crossover Information

- During Crossover Year 1 (September 1, 2016 to August 31, 2017), one set of theory examinations, designed to accommodate both the *Theory Syllabus, 2009 Edition* and the *Theory Syllabus, 2016 Edition*, will be offered.
- The examinations will be identified by the new names introduced in the *Theory Syllabus, 2016 Edition* (for example, Level 5 Theory).
- On the following examinations, alternate questions will be offered to accommodate students who have based their preparation on the *Theory Syllabus, 2009 Edition*.

Examination Name	Alternate Questions Provided for
Level 5 Theory	(Basic Rudiments)
Level 6 Theory	(Intermediate Rudiments)
Level 8 Theory	(Advanced Rudiments)
Level 9 Harmony	(Basic Harmony)
Level 10 Harmony & Counterpoint	(Intermediate Harmony)
ARCT Harmony & Counterpoint	(Advanced Harmony)

- For questions involving terminology that has changed, both terms will be given (for example, half step/semitone; authentic cadence/perfect cadence).
- Where alternate questions have been provided, the first question presented will be based on the requirements of the *Theory Syllabus, 2016 Edition* and the second question on the *Theory Syllabus, 2009 Edition*.
- Where choice is required (between the 2016 syllabus question and the 2009 syllabus question), clear instructions will be given to indicate that the student must choose **either** option A **OR** option B, as shown in the sample questions provided on the following pages.
- On History examinations, the choice will be built into the questions. Alternate questions will be given only in ARCT History Question 5, to accommodate the Independent Study Essay prepared by students working with the *Theory Syllabus, 2016 Edition*.

# Level 5 Theory

## Sample Crossover Examination Questions

Total Marks

Confirmation Number

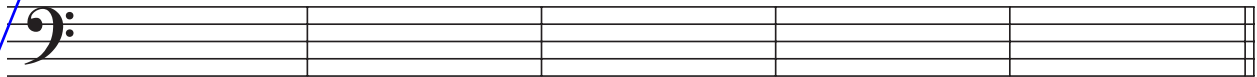
Maximum Marks  
▼

Your answers must be written in pencil in the space provided.  
Il faut que vous écriviez vos réponses au crayon dans l'espace donné.

10

1. a. Write the following notes in the bass clef.  
Use whole notes.

1. a. Écrivez les notes suivantes en clef de fa.  
Utilisez des rondes.



A flat  
la bémol

G  
sol

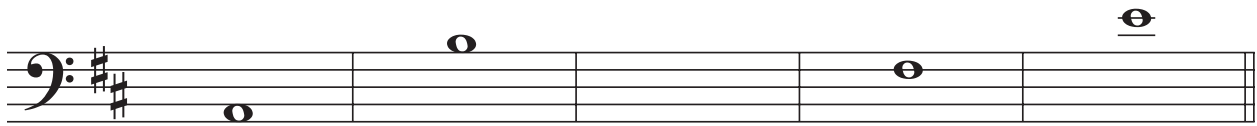
C sharp  
do dièse

D  
ré

B flat  
si bémol

b. Name the following notes.

b. Identifiez les notes suivantes.



\_\_\_\_\_

\_\_\_\_\_

\_\_\_\_\_

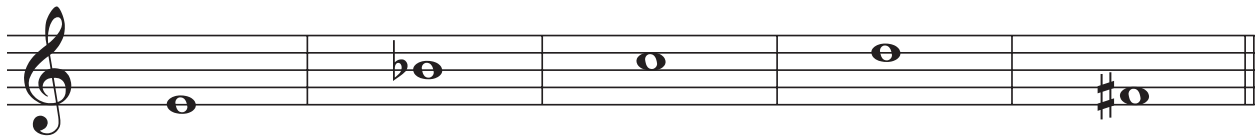
\_\_\_\_\_

\_\_\_\_\_

10

2. a. Write a whole step (whole tone) *above* each note.

2. a. Écrivez un ton entier *au-dessus* de chaque note.



b. Write a diatonic half step (diatonic semitone) *below* each note.

b. Écrivez un demi-ton diatonique *au-dessous* de chaque note.



Question 1 tests content common to both the 2016 and 2009 syllabi.

Question 2 demonstrates material for which new terms have been introduced. The new term is given first and the old term follows in parentheses.

# Level 5 Theory

## Sample Crossover Examination Questions

**Answer Question 8A OR Question 8B**  
**Répondez à la Question 8A OU à la Question 8B**

10

**8A [2016 Syllabus]**

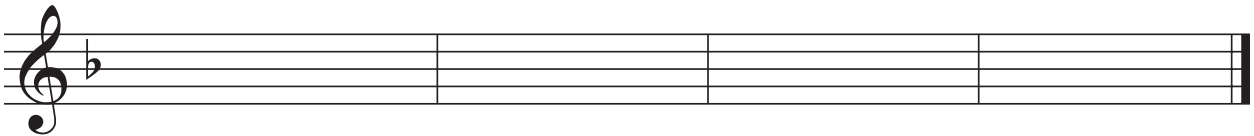
- a. Name the key of this melody.
- b. Draw a phrase mark over the given phrase and label the scale degree number of the final note.
- c. Compose a four-measure answer phrase ending on a stable scale degree.
- d. Draw a phrase mark over the answer phrase and label the scale degree of the final note.

**8A [2016 Syllabus]**

- a. Identifiez la tonalité de cette mélodie.
- b. Tracez une liaison de phrasé au-dessus de la phrase donnée et identifiez le numéro du degré de la note finale.
- c. Composez une réponse sous la forme d'une phrase de quatre mesures se terminant sur un degré stable.
- d. Tracez une liaison de phrasé au-dessus de la phrase-réponse et identifiez le numéro du degré de la note finale.



Key/Tonalité: \_\_\_\_\_



**OR/OU**

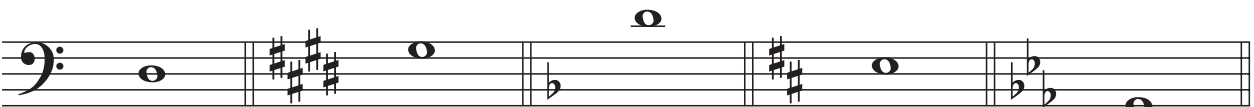
10

**8B [2009 Syllabus]**

- a. Name the *minor* key for each of the following key signatures.
- b. State whether the given note is the tonic (T), subdominant (SD), or dominant (D).

**8B [2009 Syllabus]**

- a. Identifiez la tonalité *mineure* pour chacune des armatures suivantes.
- b. Indiquez si la note donnée est la tonique (T), la sous-dominante (SD), ou la dominante (D).



- a. \_\_\_\_\_
- b. \_\_\_\_\_

Question 8A tests new content from the *Theory Syllabus, 2016 Edition*. An alternate question, 8B, has been provided for students who prepared using the 2009 syllabus.